



\$ 509,900



7046 Pramila Pl, Elkridge, MD 21075

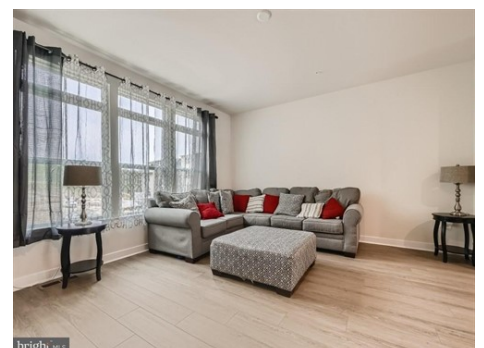
- » Beds: 3 | Baths: 3 Full, 1 Half
- » MLS #: MDHW2027350
- » Condominium | 1,680 ft<sup>2</sup> | Lot: 992 ft<sup>2</sup>
- » Main level open floor plan
- » 3 Spacious bedrooms
- » More Info: 7046PramilaPl.IsForSale.com



**Syreeta Saunders-Keys, MBA**  
 (240) 842-0315 (Direct)  
 (888) 860-7369 (Office)  
 Syreeta@keys2day.com  
<https://www.keys2day.com>



eXp Realty  
 8115 Maple Lawn Blvd.  
 Suite 350  
 Fulton, MD 20759  
 (888) 860-7369



Don't miss this nearly new townhome located in sought after Elkridge Crossing! This home features 3 spacious levels of living space. The first upper level has an open concept that makes entertaining a breeze! Enjoy the living room area for your football parties, a beautiful kitchen that boasts a granite island where additional guests can sit and enjoy hors d'oeuvres, gorgeous cabinets and gleaming stainless-steel appliances. The dining area is off of the kitchen. There is also a half bathroom and luxury vinyl plank throughout this level. Enter the deck from the dining area in morning to sit and have your coffee or tea or in the evening to star gaze. The second upper level boasts 2 bedrooms with large closets and 2 full bathrooms. The third upper level opens up to a loft to have your game nights, as well as a full bathroom and bedroom. This level can also serve as your primary bedroom suite. The entry level has a 2-car rear load garage. The rear driveway has space for 1 additional car. This home is conveniently located to shopping, dining, rte. 100, 295 and interstate 95. Schedule your appointment to see this home 2day!

